

# **VERSION 4.2 RELEASE GUIDE**

*Document Number TND-0420-1*

*December 31st, 1997*

The Network Director

North Ridge Software, Inc.

## Special Notices

This document contains proprietary information associated with a generalized software product named **The Network Director**, which is a VTAM based terminal security and productivity product developed, maintained, and marketed by North Ridge Software, Inc.

Information contained herein that is associated with other proprietary products (as identified below) is also subject to copyright law and may not be reproduced without the express written permission of the appropriate company.

All rights are reserved. No portion of this document may be reproduced, copied, distributed, transmitted, transcribed, or translated into any human or computer language, or otherwise disclosed to third parties without the express written permission of:

**North Ridge Software, Inc.**  
12515 Willows Road N.E.  
Suite 205  
Kirkland, Washington 98034-8795  
U.S.A.

(c) Copyright 1997

North Ridge Software, Inc. can be contacted via any of the following mechanisms:

**Telephone** 425/814-9000  
**FAX** 425/823-9636  
**InterNet** support@nrsinc.com  
**Homepage** http://www.nrsinc.com

North Ridge Software, Inc. makes no representations or warranties with respect to the contents hereof and specifically disclaims any implied warranties of fitness for any particular purpose.

## Acknowledgements

References within this manual to the following products should be recognized as references to proprietary products and trademarks of the following firms:

<b>Computer Associates</b>	TOP SECRET, ACF2, UCC7, ROSCOE, EMAIL, IDMS/DC, TPX
<b>IBM</b>	ACF/VTAM, ACF/TCAM, NMPF, NPDA, VM/GCS, OS/VS1, NETVIEW, NLDM, NPA, CMS, MVS, DOS/VSE, CICS/VS, TSO, IMS, RACF, NPDA, and NCCF
<b>Software AG</b>	Com-plete
<b>Sterling Software</b>	VM/SECURE

# Table of Contents

<b>Introduction</b> .....	<b>1</b>
<b>Configuration Parameters</b> .....	<b>3</b>
Common Operands .....	3
ATTRIBUTES .....	3
GROUP .....	4
ATTRIBUTES .....	4
TERMINAL .....	5
ATTRIBUTES .....	5
GROUPS .....	5
USER .....	6
ATTRIBUTES .....	6
GROUPS .....	6
<b>Commands</b> .....	<b>7</b>
GROUP .....	7
Syntax .....	7
Example .....	8
RELEASE .....	10
HELD-DEVICES .....	10
HELD-APPLS .....	10
<b>Miscellaneous Items</b> .....	<b>11</b>
Distribution Tape .....	11
DOS Installation Library .....	11
Measured Usage License Charge Support .....	12
License Fees .....	12
IFAUSAGE .....	13
New Variables .....	14
TNDLOG Page Heading .....	14
Debug Message Class .....	15
OS Console Id .....	15
Year2000 Statement .....	15
NRS Web Site .....	16
Mail Processing .....	17
Marketing .....	18
License Fee Schedules .....	19
Buckets .....	20
Publications .....	21
<b>Conversion Checklist</b> .....	<b>23</b>
Checklist Summary .....	24

<b>Appendix A. APARs</b> .....	<b>25</b>
<b>Appendix B. PTFs</b> .....	<b>27</b>
<b>Index</b> .....	<b>29</b>

# List of Illustrations

Figure 1.	The GROUP, USER, and TERMINAL ATTRIBUTES Operand	3
Figure 2.	New or GROUP TERMINAL Operands	4
Figure 3.	New or Modified TERMINAL Operands	5
Figure 4.	New or Modified USER Operands	6
Figure 5.	USERS GROUP Application Selection Panel	8
Figure 6.	CICS GROUP Application Selection Panel	9
Figure 7.	New or Modified RELEASE Operands	10
Figure 8.	WWW.NRSINC.COM	16
Figure 9.	NRS Email Ids	17
Figure 10.	Web Marketing Page	18
Figure 11.	Web Based License Fee Schedule	19
Figure 12.	Web Based Network Director Bucket	20
Figure 13.	Web Based Network Director Publication	21
Figure 14.	Installation Checklist	24



# Introduction

The Network Director's Version 4.2 Release Guide is intended to provide installations utilizing Version 4.1 or a derivative with information pertinent to the conversion from prior versions to Version 4.2. Conversion to Version 4.2 does **not require** any major adjustment for existing installations.

Version 4.2 is an upgrade and maintenance release of the nucleus of The Network Director and associated environments. The major areas that have received attention in this release are:

<b>Administrative</b>	Support for Measured Usage License Charges (MULC). Fully complies with the published IBM Year2000 initiative. Updated environment (MVS, VM) variables for a variety of version and release identifiers.
<b>Flexibility</b>	Implementation of the dynamic Group assignment mechanism
<b>Support</b>	Availability via the Internet's World Wide Web, a variety of services designed to make The Network Director more supportable and easier to maintain (PTFs, publications, licensing and marketing materials)
<b>SSI</b>	Updated executable routines and documentation for recent releases of CICS, IMS, and VMSECURE interfaces

The remainder of this document describes these items in detail. Please review this document in its entirety prior to installation of Version 4.2. Check the "Conversion Checklist" on page 23 for recommended procedures when installing the new version.





# Configuration Parameters

The following items have been introduced or modified for this release of The Network Director associated with the configuration parameters.

## Common Operands

The following ATTRIBUTES modifications apply to the GROUP, USER, and TERMINAL definitions.

```
GROUP|USER|TERMINAL  
  
[ ATTRIBUTES={NEWS-CREATION,NO-NEWS,NEWS-ALL-LOGON,  
NEWS-ONLY-ONCE}, ... )
```

Figure 1. The GROUP, USER, and TERMINAL ATTRIBUTES Operand

where:

## ATTRIBUTES

The ATTRIBUTES operand indicates specific processing characteristics associated with a network element that is associated with the corresponding definition element. The Network Director will utilize the ATTRIBUTES operand that is related to the "most detailed" definition element that applies to the network element.

Valid settings are:

- NEWS-ALL-LOGONS** the NEWS panel should be delivered to the applicable network elements every time a user logs on to the system
- NEWS-CREATION** the related network elements are authorized to create the NEWS message
- NEWS-ONLY-ONCE** the NEWS panel will be delivered to each unique user only one time (this requires the presence of the External File for tracking across executions of The Network Director)

If you set this ATTRIBUTE on a GROUP definition, it must be the default GROUP for the network element (TERMINAL or USER) or the NEWS characteristic will not operate.

**NO-NEWS**

the NEWS message is not to be delivered to a network element associated with the definition

## **GROUP**

The following changes apply to the GROUP Configuration Parameter.

GROUP

[ ATTRIBUTES={NEWS-CREATION,NO-NEWS,NEWS-ALL-LOGON,  
NEWS-ONLY-ONCE}, ... )

**Figure 2. New or GROUP TERMINAL Operands**

where:

## **ATTRIBUTES**

See "Common Operands" on page 3 for a detailed discussion of the ATTRIBUTES settings and their meanings.

# TERMINAL

The following changes apply to the TERMINAL Configuration Parameter.

```
TERMINAL  
  
[ ATTRIBUTES={NEWS-CREATION,NO-NEWS,NEWS-ALL-LOGON,  
NEWS-ONLY-ONCE}, ... )  
[ GROUPS=(alpha-value, ... ) ]
```

**Figure 3. New or Modified TERMINAL Operands**

where:

## ATTRIBUTES

See "Common Operands" on page 3 for a detailed discussion of the ATTRIBUTES settings and their meanings.

## GROUPS

The GROUP operand has been renamed to the "GROUPS" operand to allow the installation to identify a "list" of Network Director Groups that the device may join via the new Network Director GROUP command (see "GROUP" on page 7 for additional information about how this mechanism works).

# USER

The following changes apply to the USER Configuration Parameter.

USER

```
[ ATTRIBUTES={({NEWS-CREATION,NO-NEWS,NEWS-ALL-LOGON,  
NEWS-ONLY-ONCE}, ... )  
[ GROUPS=(alpha-value, ... ) ]
```

**Figure 4. New or Modified USER Operands**

where:

## ATTRIBUTES

See "Common Operands" on page 3 for a detailed discussion of the ATTRIBUTES settings and their meanings.

## GROUPS

The GROUP operand has been renamed to the "GROUPS" operand to allow the installation to identify a "list" of Network Director Groups that the user may join via the new Network Director GROUP command (see "GROUP" on page 7 for additional information about how this mechanism works).

## Commands

This version of The Network Director includes support for the following new commands. These commands may be entered on the standard Network Director Command line or via the internal TNDCMD application.

### **GROUP**

The new **GROUP** command permits the terminal user to dynamically change The Network Director GROUP he/she is a member of without affecting the logon status of the network element. Prior releases of The Network Director made GROUP assignment at the time that the terminal user became "active" within The Network Director. This is either when the device is activated (IDENTIFICATION=NO) or when the user logs on (IDENTIFICATION=YES).

### **Syntax**

The Network Director now allows the terminal operator to invoke the GROUP command to change the current GROUP assignment. The command syntax is:

```
GROUP {desired-group}
```

The "desired-group" may be any group name listed in the applicable USER or TERMINAL GROUPS= operand. If the terminal operator enters an authorized GROUP name, the Application Selection Panel will be reconstructed utilizing the characteristics of the new GROUP and message TND0833 is written to the LOG and the affected device.

If the terminal operator requests a GROUP that is not authorized via the applicable GROUPS= operand, TND0832 is issued and the current GROUP remains unaffected.

The terminal operator may request that The Network Director return to the default GROUP by simply entering the GROUP command with no operand value.

## Example

To illustrate how the new GROUPS logic and GROUP command may be useful, consider the following Configuration Parameters:

```
APPLICATION CICS1,TARGET=CICS001,TITLE='CICS One'  
APPLICATION CICS2,TARGET=CICS002,TITLE='CICS Two'  
APPLICATION CICS3,TARGET=CICS003,TITLE='CICS Three'  
APPLICATION TOCICS,TARGET=TOCICS,TITLE='To CICS Menu',  
    INITIAL-DATA=('GROUP CICS')  
  
*  
APPLICATION IMS1,TARGET=IMS001,TITLE='IMS One'  
APPLICATION IMS2,TARGET=IMS002,TITLE='IMS Two'  
APPLICATION IMS3,TARGET=IMS003,TITLE='IMS Three'  
APPLICATION TOIMS,TARGET=TOIMS,TITLE='To IMS Menu',  
    INITIAL-DATA=('GROUP IMS')  
  
*  
GROUP IMS,APPLICATIONS=(IMS1,IMS2,IMS3,TOCICS)  
GROUP CICS,APPLICATIONS=(CICS1,CICS2,CICS3,TOIMS)  
GROUP USERS,APPLICATIONS=(CICS1,IMS1,TOCICS,TOIMS)  
  
*  
USERS ++++++,GROUPS=(USERS,IMS,CICS)
```

When an individual signs on that is successfully pattern matched with the USERS definition (in this example, everyone will match), they are immediately assigned to the default GROUP of USERS (the first GROUP in the list of GROUPS operands).

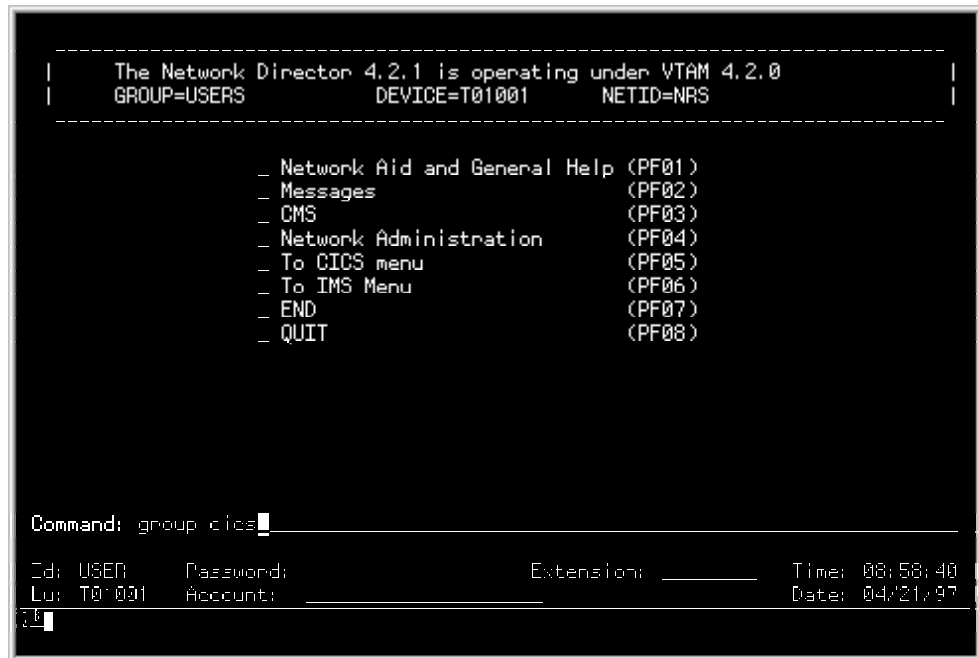


Figure 5. USERS GROUP Application Selection Panel

The terminal user can change to a menu consisting of only CICS applications by entering the command "GROUP CICS" or pressing the function key associated with the TOCICS choice on the Application Selection Panel. The CICS GROUP includes the three defined CICS systems, as well as a choice to select a menu of IMS applications.

```
-----  
| The Network Director 4.2.1 is operating under VTAM 4.2.0 |  
| GROUP=CICS          DEVICE=T01001      NETID=NRS      |  
-----  
  
_ CICS One           Down  
_ CICS Two           Down  
_ CICS Three         Down  
_ Network Administration (PF04)  
_ To IMS Menu        (PF05)  
_ Network Aid and General Help (PF06)  
_ END                (PF07)  
_ QUIT               (PF08)  
  
Command: █  
Your Group has been changed from USERS to CICS  
Tid: USGR      Password: _____ Extension: _____ Time: 09:01:46  
Lu: T0:001    Account: _____ Date: 04/21/97  
76 █
```

**Figure 6. CICS GROUP Application Selection Panel**

With a little planning, this mechanism can be used to divide your logical applications into a variety of collections (GROUPS) that can make your network much easier to utilize.

# RELEASE

The following changes apply to the RELEASE operator command:

```
RELEASE  
  
[ HELD-DEVICES ]  
[ HELD-APPLS ]
```

**Figure 7. New or Modified RELEASE Operands**

where:

## HELD-DEVICES

The **HELD-DEVICES** operand is the same as prior versions HELD operand. That is, any network elements that are current in Operator Hold status will be released.

## HELD-APPLS

The **HELD-APPLS** operand permits the Network Administrator to release all Applications in Held status with a single command. Upon completion of the command, all Applications will be in a "ready for status" state. Their actual status will be set according to the related Network Director STATUS operand.



# Miscellaneous Items

The following miscellaneous items have also been included in this release.

## *Distribution Tape*

Prior releases of The Network Director have included the DCF source for the publications as file 4 (OS) and File 9 (VM). The Page Segments used to include the graphical elements were included as File 5 (OS) or File 9 (VM). BookManager suitable files were delivered as File 10.

With the implementation of the NRS Web Site (see "Publications" on page 21), the DCF source code and BookManager formats are no longer included on the distribution tape. If your installation has a requirement for the DCF source or the BookManager format, please contact your NRS Representative to arrange for a customized delivery of the necessary elements.

## DOS Installation Library

The distribution library (physical file 10 on the distribution tape) continues to be generated via a LIBR BACKUP function, but has been reorganized for this release of The Network Director. The DOS Library now contains the following sublibraries:

<b><i>Sublibrary</i></b>	<b><i>Contents</i></b>
<b>MACLIB</b>	contains the source code for The Network Director's Assembler macros necessary to assemble Network Director exits, etc.
<b>MISC</b>	the various source code files associated with SSI modifications, sample Job Control, etc.
<b>OBJECT</b>	non-executable .OBJ files required to link edit The Network Director, which is normally not necessary (The Network Director's executable PHASE has been catalogued during library creation in the PROGRAMS sublibrary)
<b>PROGRAMS</b>	the executable core image PHASEs necessary to operate The Network Director
<b>SOURCE</b>	the various source code files associated with NRS provided sample exits, SSI modifications, and other assorted examples

Please remember that The Network Director is distributed from time to time as a complete replacement VSE Library. Do NOT place any elements into a Network Director Sublibrary that you do not wish to have overlaid.

## ***Measured Usage License Charge Support***

This release of The Network Director supports IBM's Measured Usage License Charges mechanism for measuring the number of Service Units used by The Network Director in servicing your users. This support is described in the IBM Publication *MVS/ESA Support for Measured Usage License Charges* (document number GC28-1098) and requires MVS/ESA 3.1.3 or higher with applicable maintenance applied.

### **License Fees**

The Network Director is normally licensed to a processor based upon Model Group. Some installations may prefer to pay license or maintenance fees based upon the activity levels of The Network Director. This is a recognition that The Network Director may be used for a small portion of a larger network on a large processor where the full Model Group fee may not be appropriate (i.e. the full Model Group fee does not reasonably reflect the "value received" from running The Network Director on the identified processor).

IBM's introduction of MULC is an effort to allow the value of the use of a particular software product follow the actual usage levels of the software instead of simply licensing the product to a given machine's total capacity.

Whether you choose to measure The Network Director's consumption or convert an existing license to MULC is a decision that is completely up to each individual installation. The remainder of the description of the MULC in this manual describes only the technical aspects of The Network Director's operations. To make use of MULC as a billing mechanism, please contact your NRS Sales Representative for the applicable information and fee schedules.

## IFAUSAGE

When this version of The Network Director initializes in MVS/ESA systems, it issues the appropriate SVC (IFAUSAGE) to initiate MVS/ESA collection of product based consumption via SMF.<sup>1</sup> When it initiates (REGISTERS) as a software product, The Network Director sets the following MULC operand values:

<b>DOMAIN</b>	MVS will measure the consumption of all activity that occurs in The Network Director's Address Space
<b>PRODID</b>	the literal value "TND"
<b>PRODOWNER</b>	the literal value "NRS, Inc."
<b>PRODNAME</b>	the literal value "Network Director"
<b>PRODQUAL</b>	the value of GLOBALS APPLID=
<b>PRODVERS</b>	the five characters the make up The Network Director's Version number in the form "n.n.n"

After the data has been collected you can measure the relative consumption of processor resources by The Network Director by executing IFAURP to process the collected SMF records.

---

<sup>1</sup> This information is collected into Record Type 89 by SMF and is available for subsequent processing by IFAURP.

## New Variables

The Network Director now supports the following variables:

**DATEC** includes the full 4 digit year (century included) in the current date. The DATE-FORMAT operand controls where exactly the century appears as follows:

<i>DATE-FORMAT</i>	<i>&amp;DATEC Result</i>
yymmdd	yyyy/mm/dd
mmddy	mm/dd/yyyy
ddmmy	dd/mm/yyyy

## TNDLOG Page Heading

This version of The Network Director has reformatted the first line of each output page in the following general format:

```
--[1]----- The Network Director [2] on [3] [4] [5] in [6] [7] [8]-----Page [9]
```

where:

1. is the full Year 2000 date the page was started as controlled via GLOBALS DATE-FORMAT
2. is the version of The Network Director currently operational
3. identifies the CPU Model The Network Director is operating on
4. is the operating system related information describing the system generation level
5. is the current processor's CPUID
6. the VTAM NETID in which The Network Director is operating
7. the VTAM Domain in which The Network Director is operating
8. the VTAM Subarea in which The Network Director is operating
9. current page number in the TNDLOG output file

## ***Debug Message Class***

The Network Director divides all its messages into multiple "classes" of messages called General, Internal, Security, Change, and Response categories. This version of The Network Director has added a new class logically between Internal and General called the **Debug** class. This class (numeric value 90) contains messages that are not of general interest when The Network Director is operating normally and are not fully internal in nature.

TND0244 (INQUIRE being issued) and TND0837 (VTAM Return code interpretation) are the first two messages that have been added to this class.

## ***OS Console Id***

The Network Director's operating system console interface for MVS based systems uses SVC 35 to transmit output to the system operator's console.

This release of The Network Director now uses the CONSID operand of the newer WTO systems to support extended consoles. The applicable CONSID is extracted from the Communications Input Buffer (CIB) when input is received and used when the resulting output messages are issued from within the LOG processor.

## ***Year2000 Statement***

This release of The Network Director complies 100% with IBM's published Year2000 initiative. See *The Year 2000 and 2-Digit Dates: A Guide for Planning and Implementation* (GC28-1251) for additional information.

This version of The Network Director has actually added a few Network Director functions to permit installations that have strict Year2000 external requirements to take advantage of improved date handling. See "New Variables" on page 14 for specific details about these new functions.

**Note:** Earlier versions of NRS products are also Year2000 ready and comply with requirements that were in place when they were released. Network Director 4.1.0 is **Year2000** ready, but NRS recommends updating to 4.2 or later prior to century end.

## NRS Web Site

North Ridge Software, Inc. now operates a dedicated Web Server dedicated to supporting NRS licensed locations at WWW.NRSINC.COM. This server is directly connected to the Internet and can be used to improve communications both directions between NRS and NRS licensed locations.

HTTP service is provided from the NRS Home Page at <http://www.nrsinc.com/index.html>, which has an appearance similar to:

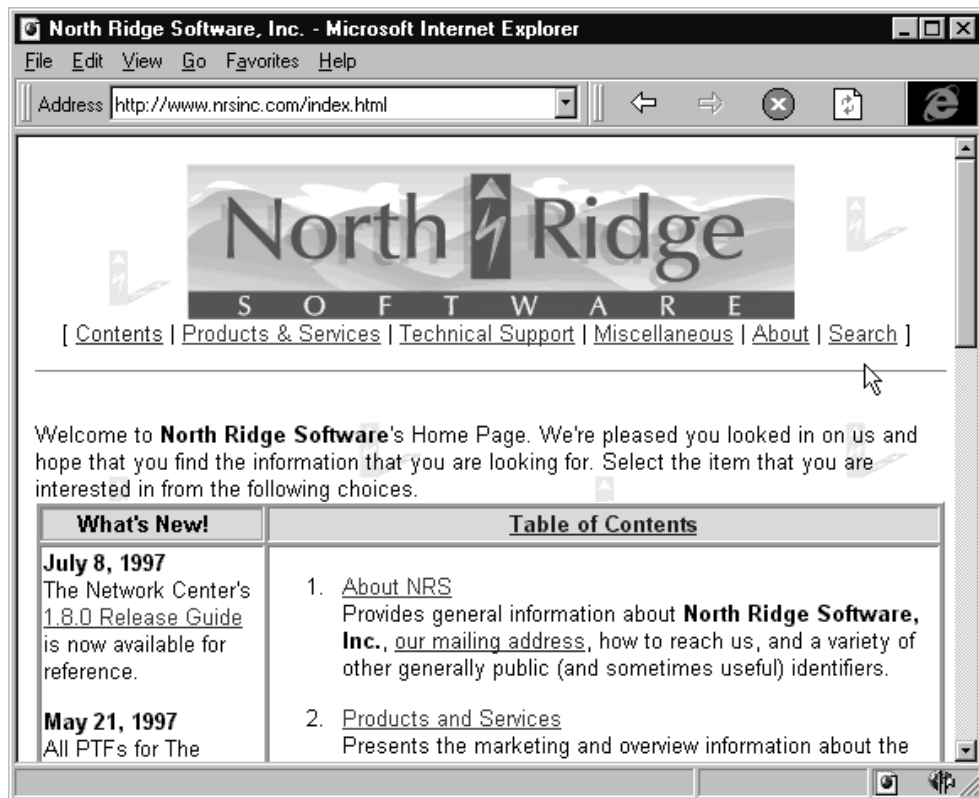


Figure 8. WWW.NRSINC.COM

Services offered by NRS to its clients associated with this server via the Internet are listed in the following paragraphs.

## Mail Processing

You can communicate directly with NRS staff by sending mail to:

userid@NRSINC.COM

**Figure 9. NRS Email Ids**

Where:

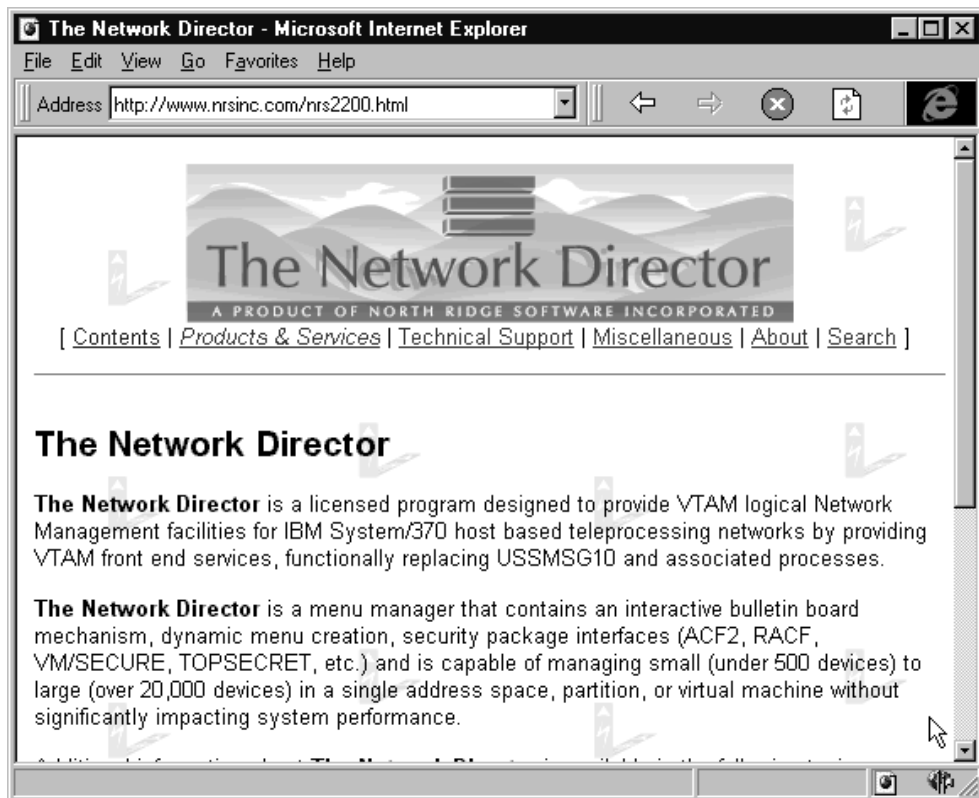
<b>userid</b>	can be the first name of the individual you would like to communicate with. It can also be one of the following generic Email ids:
<b>ACCOUNTING</b>	questions, requests, or comments about any aspect of NRS invoicing processes
<b>INFO</b>	requests for general information about North Ridge Software, Inc.
<b>SALES</b>	any issue related to sales activities associated with NRS products
<b>STAFF</b>	general items of interest to any staff member within NRS
<b>SUPPORT</b>	accepts mail related to the technical support of any NRS software product
<b>WEBMASTER</b>	suggestions, requests, or observations associated with the NRS Web site or related issues
<b>NRSINC.COM</b>	is the North Ridge Software, Inc. registered Domain Name and must be specified as indicated

The NRS Mail Server supports all standard SMTP services, including the use of "attached files". If your mail package does not support the use of attached files, consider using FTP services to transfer and receive machine readable copies of files.

## Marketing

The NRS Web Site contains marketing descriptions of all the NRS product offerings, which can be utilized to orient yourself to any NRS products that you may not be licensed for. This is also useful to use as a reference point for features in the products you may already have licensed.

Many of the "pages" contain conceptual charts and diagrams identifying how a particular NRS products operates, as follows:



**Figure 10. Web Marketing Page**

However, remember that these pages are general in view (that's our definition of "Marketing"). If you are looking for detailed information, see "Publications" on page 21)



## License Fee Schedules

The current NRS License Fee schedules for our products are also available via the Web Site. The license fee schedules not only identify what the fees are associated with acquiring a new license, but also imply the annual maintenance fees

**The Network Director** is normally licensed for use on a single processor (CPU). Individual processor license fees are graduated, based upon the Model Group for the licensed CPU and are quoted as CPU, Rental, or Installment license fees.

All fees listed are in U.S. dollars and do not reflect applicable discounts (DSLO, etc.) or applicable local taxes as described under [Licensing Policies](#).

License fees for The Network Director on a single processor are as follows:

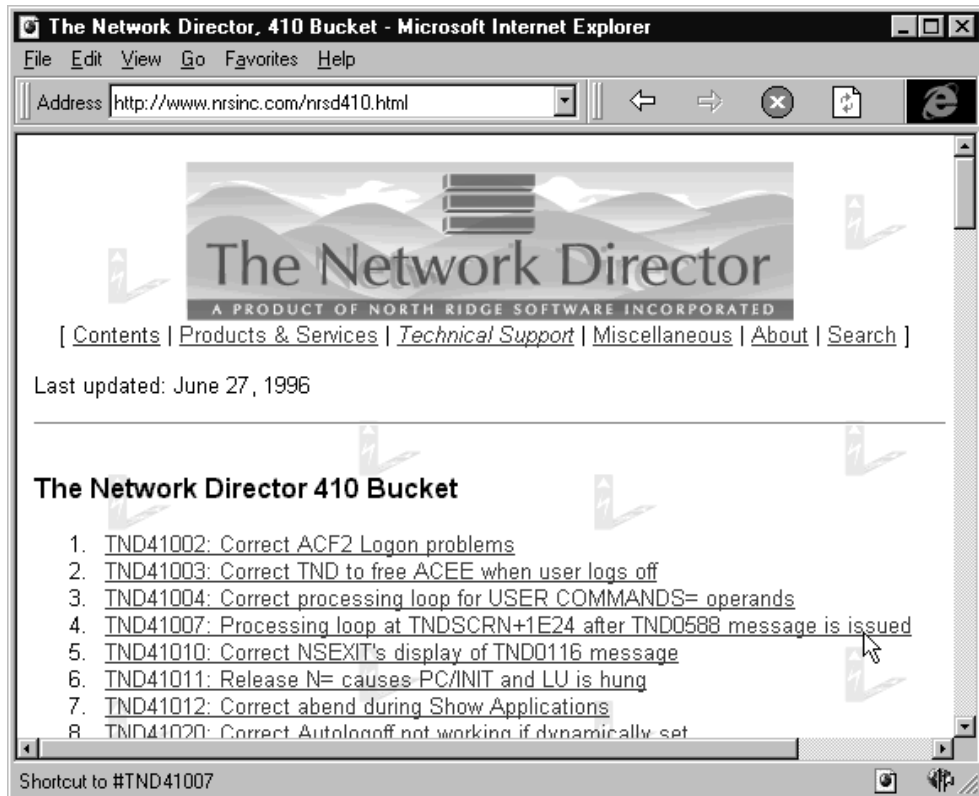
Network Director License Fees							
Group	CPU OTC	Rental ILC	Rental MLC	Installment (1 Year)	Installment (2 Year)	Installment (3 Year)	Installment (4 Year)
01-10	\$6,600.00	\$1,234.20	\$303.60	\$832.50	\$398.75	\$320.83	\$281.88
11-20	\$11,550.00	\$2,159.85	\$531.30	\$1,106.88	\$697.81	\$561.46	\$493.28
21-30	\$16,500.00	\$3,085.50	\$759.00	\$1,581.25	\$996.88	\$802.08	\$704.69
31-40	\$19,800.00	\$3,702.60	\$910.80	\$1,897.50	\$1,196.25	\$962.50	\$845.63
41-50	\$24,750.00	\$4,628.25	\$1,138.50	\$2,371.88	\$1,495.31	\$1,203.13	\$1,057.03
51-60	\$29,700.00	\$5,553.90	\$1,366.20	\$2,846.25	\$1,794.38	\$1,443.75	\$1,268.44
61-70	\$41,250.00	\$7,713.75	\$1,897.50	\$3,953.13	\$2,492.19	\$2,005.21	\$1,761.72
71-100	\$55,000.00	\$10,285.00	\$2,530.00	\$5,270.83	\$3,322.92	\$2,673.61	\$2,348.96

**Figure 11. Web Based License Fee Schedule**

**Note:** The actual invoice amounts may differ from what is listed if your installation has applicable Volume Discounts or Enterprise License arrangements.

## Buckets

The NRSINC Web Page also contains the text for the current buckets for all supported releases of The Network Director and The Network Center available online. You can browse the actual contents of a particular bucket:



**Figure 12. Web Based Network Director Bucket**

It is also possible to use FTP (File Transfer Protocol) to obtain a copy of the applicable bucket from the NRSINC system at [FTP.NRSINC.COM/NRSINC](ftp://FTP.NRSINC.COM/NRSINC).

If you find that you have a need to FTP a file to NRS Technical Support, you may send files to [FTP.NRSINC.COM/PUBLIC](ftp://FTP.NRSINC.COM/PUBLIC). Please use the applicable NRS APAR number as a portion of the FileName so that NRS can identify what the file relates to. It is also wise to send an Email message to the appropriate individual or function within NRS Technical Support to let them know you have uploaded a file that requires some type of action.

## Publications

The more recent versions of the NRS product publications have also been converted to HTML for Web browsing. You can see the actual contents of the manuals without ever having the actual hardcopy.

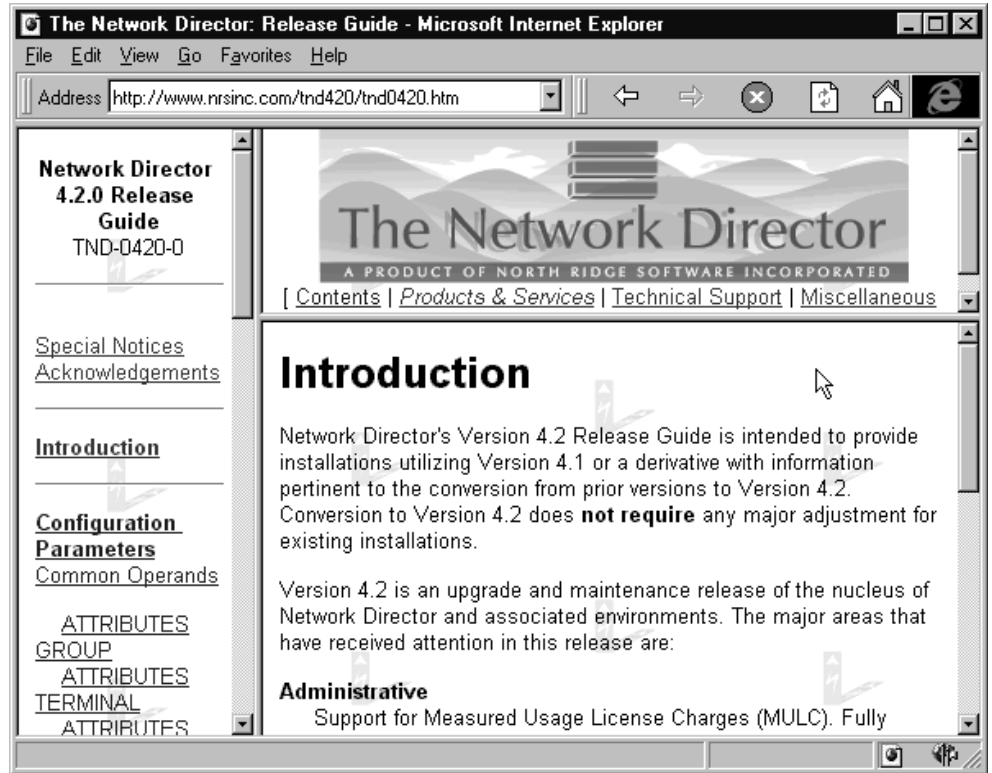


Figure 13. Web Based Network Director Publication

These publications are a direct conversion of the DCF source that produces the hardcopy manuals and will replicate exactly what they contain (any errors contained in the hardcopy manuals will be replicated in the Web based versions). Keep in mind we try to update the publications regularly, but the Web based publications are intended to reflect the status of the publications at a specific point in time (watch the publication TNL level to identify a specific level of the publication).



# Conversion Checklist

Version 4.2 has is generally upward compatible for all users unless you modify your usage of The Network Director to take advantage of newer features or options.

Additional education or orientation should be necessary only if you plan to take advantage of one or more of the added features.

## Checklist Summary

The following figure can be used to guide you in your efforts to convert to Version 4.2 from a Version 4.1 system. The installation process of Version 4.2 has *not* significantly changed from a Version 4.1 install. Generally, the Configuration Parameters continue to be upward compatible.

Step	Task	Completed
1	Unload the distribution tape according to the Installation Guide (do not overlay any Version 4.1 or older libraries). Remember, the distribution tape has been reformatted.	
2	Contact NRS Technical Support or your local representative for any information in the <i>bucket</i> for your tape. You can contact NRS via:  <b>Phone</b> 425/814-9000 <b>FAX</b> 425/823-9636 <b>Internet</b> support@nrsinc.com <b>Web</b> http://www.nrsinc.com/nrs3000.html	
3	Execute IDCAMS (REPRO REPLACE) to unload the new External File (the file is upward and downward compatible).  NRS recommends that you copy the current production file and then REPRO REPLACE the new file into it.	
4	Re-assemble and link-edit any exits you may be using that are not replaced by a Version 4.2 function.	
5	Compare any PTFs that you have applied against the 4.1 nucleus (DISPLAY PTFS will show the list) against the contents of "Appendix B. PTFs" on page 27.  Contact NRS Technical Support about any PTFs that are not included in this release.	
6	Evaluate the new options for use in your installation (GROUP, MULC, etc.).	
7	Test Version 4.2 independently of the production Version for proper parsing of the Configuration Parameters and proper operation.	
8	Prepare any documentation or memos required to inform your end users of the new features or operational differences that may impact them.	
9	Put Version 4.2 into production.	

Figure 14. Installation Checklist

## Appendix A. APARs

The following APARs (problem reports) have been addressed and/or resolved by one or more items included with this Version of The Network Director.

<b>APAR</b>	<b>Description</b>
<b>NRS4573</b>	Request to specifically authorize NEWS creation ability
<b>NRS4699</b>	Lu type1 devices should not get the news.
<b>NRS4701</b>	Request to propagate NEWS-ALL-LOGONS to USER, GROUP items
<b>NRS5339</b>	Request for NEWS-ALL-LOGONS at the USER level
<b>NRS5825</b>	IMS SSI with IMS 5.1 and national characters don't work properly
<b>NRS5912</b>	Support for turn of the century dates for Year 2000 and beyond
<b>NRS5982</b>	TND0236 (disabled device) message does not appear correctly
<b>NRS6002</b>	IMS U0757/U0513 after ACF2 signon failure after TND1339
<b>NRS6004</b>	VMXSTK0039E received from TNDVMS VERSION command as startup
<b>NRS6028</b>	RACF Password Expiration interval (GLOBAL/LOCAL) checked wrong
<b>NRS6037</b>	Application ADD doesn't initialize FDE-NAME correctly
<b>NRS6043</b>	ACF2 SSI signon receives back Default Userid on ASSIGN
<b>NRS6062</b>	IMS 4.1 DFSCNXA0 source code changed by PN69409
<b>NRS6071</b>	IMS ETO=M support for IMS 4.1 and SSI Usermod to DFSCNXA0
<b>NRS6120</b>	ACF2/CICS indicates "Userid too long" when NAME is 8 characters
<b>NRS6133</b>	S0C4 at TNDLGNX0+2B4 in IMS when non Director session started
<b>NRS6137</b>	CICS INITIAL-FUNCTION is invalid with SSI=INHERIT
<b>NRS6138</b>	ACF2/CICS 4.1 and TNDGMMSA get "signoff is complete" at signon
<b>NRS6155</b>	USER AUTHORIZATION= operand doesn't accept enough parameters
<b>NRS6163</b>	TNDUTIL DISPLAY S0C4s working with new External File





## Appendix B. PTFs

The following PTFs were written after release of Version 410 and have been included as source modifications in Version 421.

<i>PTF</i>	<i>Description</i>
<b>TND360M2</b>	Change location of TND8nnn literals for VMSECURE 2.0C
<b>TND370D8</b>	Avoid updating DIRectory blocks that haven't been changed
<b>TND370D9</b>	Reset NIB2EDS at session establishment
<b>TND370E0</b>	Issue Simlogon after Cisdst when Cisdst failure
<b>TND370E1</b>	Handle INQUIRE 1453 the same as 144C
<b>TND370E2</b>	Collect the return code and feedback from INQUIRE APPSTAT
<b>TND370E3</b>	Validate that LU1 device output has a positive length
<b>TND370E5</b>	Release queued messages when Clean Up RU received
<b>TND401A0</b>	Detect variables in a LOGO beyond column 72
<b>TND401A1</b>	Correct abend S0C4 in TNDKEYS
<b>TND401A3</b>	Eliminate potential for STATUS-INTERVAL S0C9 after DISPLAY
<b>TND401A5</b>	Conditionally reset Id: and delete message on session restart
<b>TND401A8</b>	Honor Application Held status in TND0595 logic cycle
<b>TND401A9</b>	Free WAEBUF in TNDINPUT before RECEIVE ANY
<b>TND401B0</b>	Handle INQUIRE 1453 the same as 144C
<b>TND401B1</b>	Extend Command line to right edge of 80 character screen
<b>TND401B3</b>	Disable APPLICATION FDE-NAME= processing
<b>TND401B4</b>	Change location of TND8nnn literals for VMSECURE 2.0C
<b>TND401B5</b>	Adjust offsets for fields in TND8111 VMSECURE message
<b>TND401B6</b>	Insure password is upper case in SSI buffers
<b>TND401B7</b>	Honor Extension value in SSX to determine whether to LOGON
<b>TND401B8</b>	Handle VMXCMD0094S properly for VMSECURE 2.0c
<b>TND401B9</b>	Correct TND401B4 for proper processing of TND8109 response
<b>TND401C0</b>	Detect a zero length Broadcast Message during dynamic update
<b>TND40179</b>	Correct random abends after TNDSTOR message issued
<b>TND40181</b>	Activate HELP or INFO from Administration Command line
<b>TND40182</b>	Validate that LU1 device output has a positive length
<b>TND40183</b>	Correct problems in Show Aib when messages are issued
<b>TND40184</b>	Correct problems in Show Aib when messages are issued
<b>TND40186</b>	Correct problems in Show Aib when messages are issued
<b>TND40188</b>	Correct SSI storage accumulation when EXT12 RC[] 0
<b>TND40189</b>	Correct processing after ACF2 logoff when user in application
<b>TND40190</b>	Don't send TND0570 message if user not authorized for TNDMSG
<b>TND40191</b>	Correct TND to free ACEE when user logs off
<b>TND40193</b>	Release N= causes PC/INIT and LU is hung
<b>TND40196</b>	Correct "RESET" within ADMIN to reset monitor mode
<b>TND40198</b>	Correct abend when Message with no data is sent
<b>TND41001</b>	Blank fill empty variable names over 8 characters in length
<b>TND41002</b>	Correct ACF2 Logon problems

**TND41003** Correct TND to free ACEE when user logs off  
**TND41004** Correct processing loop for USER COMMANDS= operands  
**TND41006** Correct Application status when using Status=ISTnnn  
**TND41007** Processing loop at TNDSCRN+1E24 after TND0588 message is issued  
**TND41008** Change session restart from 0831 sense to 082B  
**TND41010** Correct NSEXIT's display of TND0116 message  
**TND41011** Release N= causes PC/INIT and LU is hung  
**TND41012** Correct abend during Show Applications  
**TND41013** Correct Show application panel problems  
**TND41014** Correct abend in TNDOS after message TND0006 message is issued  
**TND41015** Reset selection screen attribute during VTAM LOGON exit  
**TND41016** Recognize IST453 as a final response to APPL STATUS= INQUIRE  
**TND41019** Correct TNDEXT05's placement in NRP62 for LU 6.2 sessions  
**TND41020** Correct Autologoff not working if dynamically set  
**TND41021** Correct TND0006 messages out of TNDDISP+DAC  
**TND41022** Post TND Main task immediately from LU 6.2 IRB code  
**TND41023** Correct abend S0C4 in TNDKEYS  
**TND41027** Correct ptf TND41008 to not cause PC/INI  
**TND41028** Change location of TND8nnn literals for VMSECURE 2.0C  
**TND41029** Correct RACFSTAT attribute to work  
**TND41032** IMS SSI Password with leading national characters fails logon  
**TND41033** Correct display of &K variable for values beyond 9  
**TND41035** Correct Lu: cosmetic display in Id area  
**TND41037** Change the ACF2 Dialog buffer handler to increase message size  
**TND41038** Correct ACF2's dialog prompt process to delete residual buffer  
**TND41039** Correct default length of &SMF variable  
**TND41040** Replacement for TND370E0 for Version 4.1.0  
**TND41047** Propagate SEND return code properly in VTAM interface  
**TND41048** Correct implied COMMANDS=YES processing for USER, TERMINAL  
**TND41050** Correct SHOW APPLICATIONS FDE-NAME processing  
**TND41056** Correct TopSecret/MVS Internal linkage  
**TND41057** Set ANEACEE address correctly for TopSecret ENVIR=DELETE  
**TND41058** Set TopSecret logoff WRK area address properly  
**TND41061** Handle 3.7.0 Profile record PARM fields properly  
**TND41062** Conditionally reset Id: and delete message on session restart  
**TND41063** Test ADBFDENM properly for dynamically ADDED APPLICATIONS

# Index

## A

ACCOUNTING 17  
APARs 25  
ATTRIBUTES 3, 4, 5, 6

## B

bucket 20, 24

## C

common operands 3  
configuration parameters 3  
CONSID 15  
Console Id 15  
conversion checklist 23

## D

DATEC 14  
Debug message class 15  
definition statements 3  
distribution tape form 11  
DOMAIN 13  
DOSVSE library 11

## E

Email 17, 24

## F

FAX ii, 24  
FTP 20

## G

GROUP 3, 4  
GROUP command 7  
GROUPS 5, 6

## H

HELD-APPLS 10  
HELD-DEVICES 10  
homepage ii  
HTTP 16

## I

IFAURP 13  
IFAUSAGE 12, 13  
installation steps 24  
Internet 24  
InterNet address ii  
Internet WWW 16

## L

License Fee Schedules 19  
license fees 12

## **M**

mail 17  
Marketing 18  
measured usage 12  
message class 15  
MULC 12

## **N**

new commands 7  
NEWS-ALL-LOGONS 3  
NEWS-CREATION 3  
NEWS-ONLY-ONCE 3  
NO-NEWS 4  
NRSINC.COM 17

## **O**

obtaining fixes 20

## **P**

PRODID 13  
PRODNAME 13  
PRODOWNER 13  
PRODQUAL 13  
PRODVERS 13  
PTFs 20, 27  
publications on the web 21

## **R**

RELEASE 10

## **S**

SALES 17  
SMF recording 12  
SMTP 17  
STAFF 17  
STATUS 10  
SUPPORT 17

## **T**

TERMINAL 3, 5  
TNDLOG 14

## **U**

USER 3, 6

## **V**

VSE library 11

## **W**

Web Site 16  
WEBMASTER 17  
World Wide Web 16

## **Y**

Year2000 15